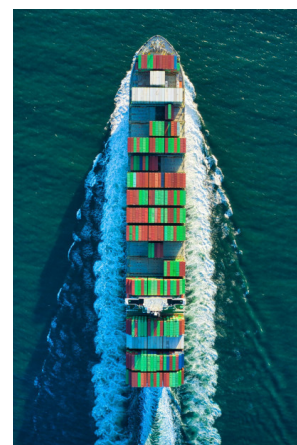


# CNC GROUP

## COMPANY PROFILE



## 02

# CONTENTS

• Company Overview and Values	3
• Our Founder	4
• Executive Team	5
• Company Portfolio	
◦ National Accessories Ltd.	7
◦ Multi-Plast Accessories Ltd.	8
◦ Columbia Enterprise Ltd.	9
◦ Silver Soap Ltd.	10
◦ JES Holdings Ltd.	11
• Sustainability	12
• Social Responsibility	13
• Why Choose Us?	14
• Why Bangladesh?	15
• Contact Us	16

## 03

## COMPANY OVERVIEW

**CNC Group** is a well-established and reputable organization based in **Chittagong** (with extensive operations in **Dhaka**) that boasts over **30 years of experience** in:

- **Manufacturing**
- **Shipping and Logistics**
- **Engineering and Construction Services**

## COMPANY VALUES



### Quality

**CNC Group** is proud to claim that the **Products and Services** it provides to our Customers, Clients, and Partners are of the **highest caliber**. Rest assured, we will not stop at anything to **exceed your expectations and standards** every step of the way.



### Respect

**CNC Group** firmly believes in **treating all** its employees with **Dignity and Respect**. From **Factory Workers** to **Executive Staff**, we firmly believe in treating others the way we want to be treated ourselves.



### Sustainability

**CNC Group** has a **steadfast commitment** to ensuring that all **environmental standards** are being met in our Manufacturing operations - from **Waste Water Treatment** to **Air Filtration** and **Personal Protective Equipment (PPE)**.

## OUR FOUNDER



*“Education is the passport to the future  
- the only way for us to move forward  
as a nation is by empowering  
the leaders of tomorrow.”*

Our late Chairman Md. Ezharul Hoque came from humble beginnings growing up in rural Fatikchari, Chittagong.

He obtained his Bachelor's Degree in Science (BSc) in 1953 from Chittagong Government College where he became active in student politics and played a vital role in the country's Language Movement.

Soon after graduation he joined the family's construction-related business in Yangon, Myanmar. In 1964, he moved the family business to Bangladesh.

Upon his return, he joined the 'Karnaphuli Group' as a Partner, where he set up and managed among many things, a Customs Brokering and Shipping Agency.

Before parting ways with Karnaphuli in 1992, he founded Columbia Enterprise Ltd. - CNC Group's Shipping and Logistics arm.



05

## EXECUTIVE TEAM

*“Integrity, intelligence, and energy - that's what we strive for here at CNC Group.”*

**MANAGING DIRECTOR**

Md. Saiful Hoque received his Bachelor's Degree in Engineering from Columbia University in 1986 followed by a Master's Degree from Texas A&M University in 1988.

Upon completion of his Graduate Degree, he joined Gulf Interstate Engineering Company in Houston, USA serving as a Project Engineer.

He returned to Bangladesh in 1992 to join Columbia Enterprise Ltd., the family business of Shipping and Freight Forwarding services. Alongside his father, Saiful worked relentlessly to steadily undertake new ventures and steer CNC Group to becoming what it is today.

Upon completion of his Bachelor's Degree in Electrical Engineering from the University of Texas, Arlington in 1988 followed by a Master's Degree in 1991 from Texas A&M University, Md. Yousuf Kafiluddin returned to Bangladesh in 1994.

He joined CNC Group in 2015 bringing over 20 years of expertise in Garments and Garment's Accessories production and export in Bangladesh.

He is a Former Director of BGMEA (Bangladesh Garment Manufacturers & Exporters Association, 2009 - 11) and also a member of Institution of Engineers, Bangladesh.

**EXECUTIVE DIRECTOR**

06

## EXECUTIVE TEAM

Upon successful completion of his education, Mr. A B K Mohiuddin (Shamim) joined the shipping trade and now boasts over 40 years of extensive experience in shipping and logistics.

In the past, Mr. Mohiuddin has worked with renowned principals such as Hapag-Lloyd and many more. Over the years of his tenure, he has participated in numerous professional training programs in Bangladesh and abroad on Container Handling Operations.

He is now a member of the Institute of Traffic Administration, UK. He joined CNC Group in 2018.

**EXECUTIVE DIRECTOR****DIRECTOR**

Mohd. Iramul Hoque (Iram) completed his Bachelor's in Industrial Engineering in 2018 from Purdue University.

He joined Deloitte Consulting LLP as a Consulting Analyst based out of New York City having previously worked in similar roles at PricewaterhouseCoopers LLP & Landis+Gyr.

Soon thereafter, Iram decided to leave the world of consulting in the search of more hands-on work.

He decided to return to Bangladesh to take up the family business and hope to grow it in the years to come.

07



# NATIONAL ACCESSORIES LTD.

A 100% EXPORT ORIENTED ISO CERTIFIED COMPANY

## Approval List:

- Arcadia Group
- ASOS
- Banana Republic
- C&A
- Carrefour Group
- Craghoppers
- Debenhams
- Edinburgh Woolen Mills
- GAP Inc.
- JC Penney
- K-Mart
- Mackays
- Mango
- Marks & Spencer
- Matalan
- Mothercare
- Old Navy
- Sainsbury's
- Sears
- Tesco
- UMBRO
- Wal-Mart
- Woolworths etc.

**National Accessories** has been involved in the production of zippers since **1995**. We began our operations manufacturing **Nylon zippers** and soon expanded to the production of **Plastic and Metal zippers** as well.

We manufacture **Closed-End, Open-End, Two-Way, and Invisible zippers** of various **sizes**.

We are the sole licensee of **SLiK zippers** in Bangladesh - a brand established in **1936** that has grown from a small manufacturing business that has grown to become a **global supplier** of top-quality zippers.



We are an **Oeko-Tex 100, Trim Supplier Qualification Program (TQP)**, and **ISO 9001:2015** certified company.

National has a steadfast commitment to a **sustainable future and worker safety**.

We have been audited and certified by **Alliance for Bangladesh Worker Safety** (commonly known as Alliance) and we recently acquired our **Global Recycled Standard (GRS)** certification.



**SLiK**

Est. 1936

08



# MULTI-PLAST ACCESSORIES LTD.

A 100% EXPORT ORIENTED MOULDED PLASTIC COMPANY

**Mult-Plast Accessories (MPAL)** manufactures various injection-moulded plastic products, including **Uniplast VICS hangers** as well as an innovative and **sustainable new hanger** design aptly named **the Janger**.

MPAL's operation (as Columbia Multi-Tech Ltd.) in **Chattogram began in 1999** and **expanded to Dhaka in 2007**.



We are a **SMETA** and **ISO 9001:2015** certified company.

## Uniplast Approvals List:

- AAFES
- Academy
- Bloomingdale's
- Burlington
- Dillard's
- Dollar General
- JC Penney
- K-Mart
- Kohl's
- Macy's
- Modells
- Nordstrom
- Saks Fifth Ave
- Sears etc.

## Janger Approvals List:

- Auchan
- Bel & Go
- Burtons
- C&A
- Gemo
- Hema
- Grip Grab
- Marks and Spencer's
- Matalan
- Nett Fashion
- Sanastore





09



# COLUMBIA ENTERPRISE LTD.

A SHIPPING AND ALLIED SERVICES COMPANY

Established in 1989, Columbia Enterprise Ltd (CEL) began its shipping services primarily dealing with Tramp Vessel Handling.

As CEL grew over the years, they expanded into representation of **mainlines, feeders, and NVOCCs**, acquiring agencies of:

- **Safmarine** (South Africa's national carrier)
- **C.B. Marine** (Curtain Brother's of Australia)
- **PACC Container Line** (Singapore)
- **Perma Container Line** (Dubai), etc.



As agents, CEL has maintained a steadfast relationship with **Wan Hai Lines of Taiwan** for **over 20 years** now and hope to continue on this fruitful journey for many more!

Columbia Enterprise Ltd (CEL) provides services such as:

- **Port Agency Services**
- **Liner / NVOCC Agency Services**
- **International Freight Forwarding**

Through its **sister concerns**, CEL provides other shipping-related services including:

- **Customs Brokerage**
- **Warehousing**
- **Inland Transportation etc.**



10



## SILVER SOAP LTD.

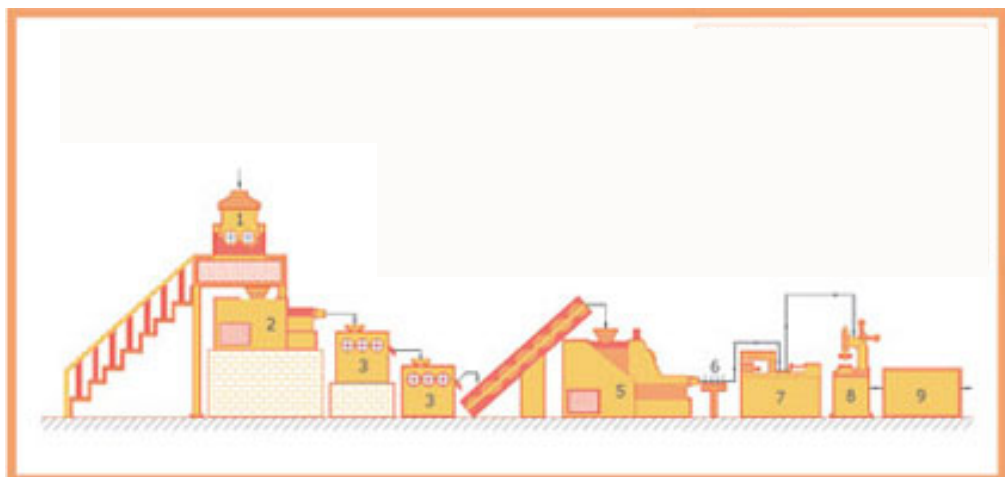
**AN EXPERT IN FAST-MOVING CONSUMER GOODS**

**Silver Soap Ltd (SSL)** began operations in Bangladesh in 1974 under the name of **Lucky Soap Ltd.** It was renamed **Silver Soap Ltd.** in 1990 and was **acquired by CNC Group** in 2007.

**SSL** operates as a **contract manufacturer of bar soap** for various **conglomerates and multi-nationals.**

Some of the most recognized brands **SSL** has worked with over the years include **ACI, Reckitt-Benckiser, and Rohto** producing bar soap under the brand names of **Savlon, Dettol, and Oxy**, respectively.

With **two production lines, SSL** is able to produce up to **1,500 tons of soap per month** with the plan of **expanding our production capacity** in the coming years through the means of a **new state-of-the-art facility.**





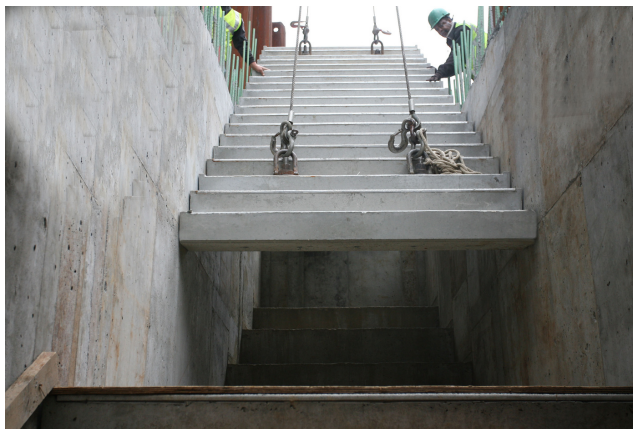
## JES HOLDINGS LTD.

**BUILDING YOU A STRONG FOUNDATION**

**JES Holdings Ltd** was set up in 2002 beginning its operations in **Commercial and Industrial real-estate development** within Bangladesh.

Recently, JES began providing a range of **Civil Engineering** and **Construction Management** services that include **Drafting, Estimating, Bills and Routings**, etc.

**JES** has provided over **\$5 million** in **cost savings** for their premier client **A.C. Miller Concrete** throughout our **decade-long partnership**.



**A.C. MILLER**  
CONCRETE PRODUCTS, INC.

# SUSTAINABILITY

## OUR COMMITMENT TO A GREENER FUTURE

“Sustainability is not a goal to be reached but a way of thinking, a principle we must be guided by.”

CNC Group is steadfast in its commitment to a **sustainable future**. Throughout the organization, management, staff and workers alike make the very best effort to adhere to the **Principles of the 5 R's - Refuse, Reduce, Reuse, Repurpose, and Recycle**.

CNC Group is proud to claim that it was one of the organizations in Bangladesh to establish **Effluent Treatment Plants (ETP)** in all of its manufacturing operations, years before the Government of Bangladesh had made it mandatory.

All defective goods are subject to **re-work** and CNC Group is currently working on getting the **Global Recycled Standard (GRS) certification** for our Garment's Accessories manufacturing operations.

In addition to this, the organization makes it a high priority to **re-purpose** whatever materials possible in the office and the factories alike. Workers and employees actively try to **reduce the usage of one-time products** such as printing paper, paper plates and cups, plastic cutlery etc.



## SOCIAL RESPONSIBILITY

### GIVING BACK TO THE COUNTRY AND COMMUNITY



The Late Chairman Ezharul Hoque founded **Syed-Syeda Memorial High School** in his home village of **Fatikchari, Chittagong**.

The school serves children between the ages of **12 and 18**, living within a 10 square-km area, providing education at little to no cost.

**CNC Group** has **funded** the operations of the school since **2006**.



The **Chittagong Kidney Foundation (CKF)** is a non-profit foundation located in **Khulshi, Chittagong**.

**CNC Group** has been involved in **helping subsidize the cost of dialysis** for patients with kidney failure since **2010**.



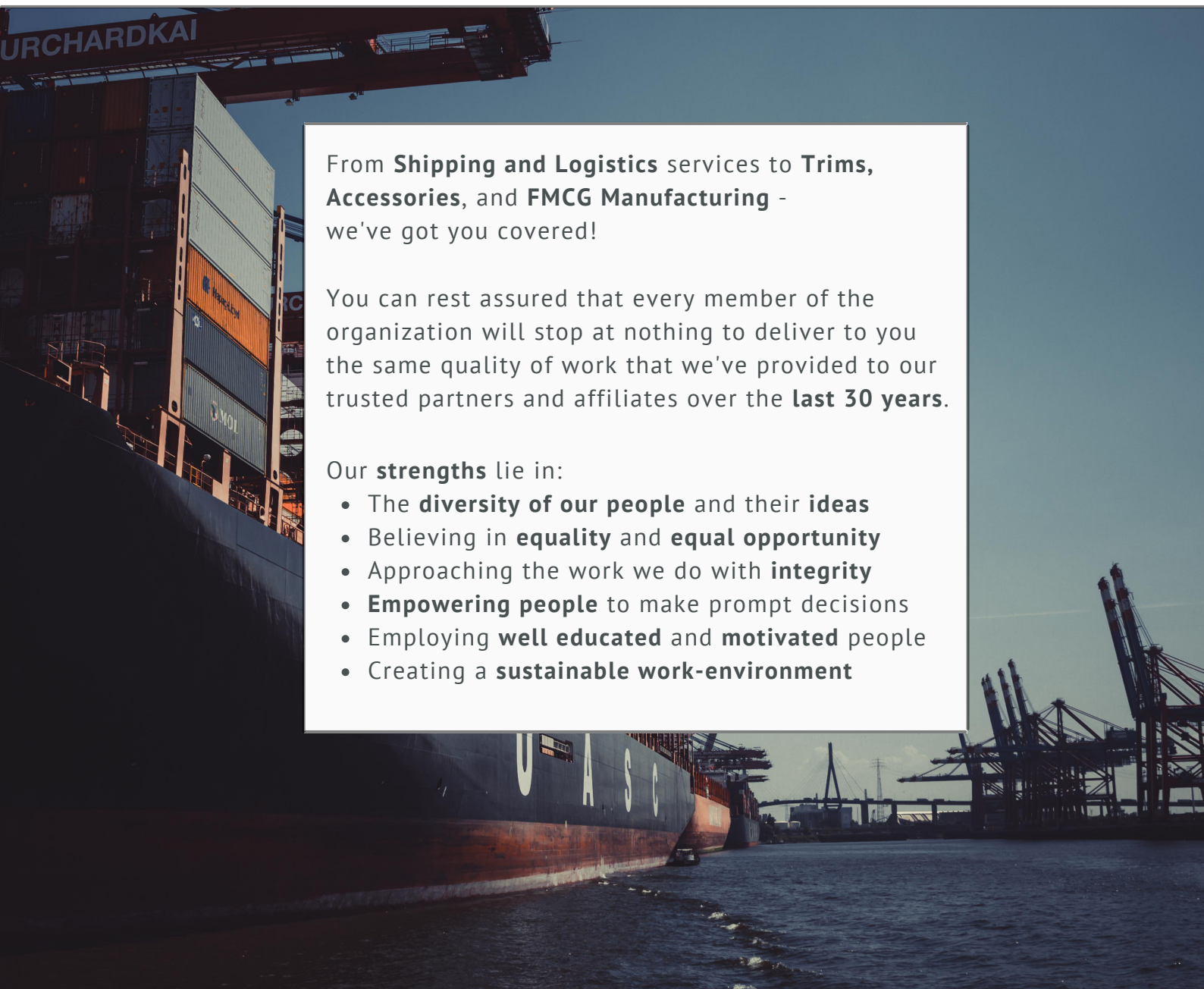
**CNC Group** donates to a number of charitable causes through active participation in the **Rotary Club of Chittagong**.

Over the years the organization has contributed to the **Society for Assistance of Hearing Impaired Children (SAHIC)**, **Zero Club Foot initiative (ZCF)**, and the **Thalassemia Foundation of Chittagong**.

## WHY CHOOSE US?

MANUFACTURING EXCELLENCE, DELIVERING RELIABLY

“*Customer satisfaction is our passion and hard work is our motto - you cannot succeed without both.*”



From **Shipping and Logistics** services to **Trims, Accessories**, and **FMCG Manufacturing** - we've got you covered!

You can rest assured that every member of the organization will stop at nothing to deliver to you the same quality of work that we've provided to our trusted partners and affiliates over the **last 30 years**.

Our **strengths** lie in:

- The **diversity of our people** and their **ideas**
- Believing in **equality** and **equal opportunity**
- Approaching the work we do with **integrity**
- **Empowering people** to make prompt decisions
- Employing **well educated** and **motivated** people
- Creating a **sustainable work-environment**

# BANGLADESH OUTLOOK

## WHY BANGLADESH? WHY NOW?



Bangladesh is **Asia's fastest-growing economy**. Some of the key indicators of the country's promise are highlighted below:

- **Average Real GDP growth rate of 8%** since 2016
- **Projected Real GDP growth rate of 8%** till 2025
- **Positive GDP growth rate** despite COVID-19 in 2020
- **Exiting UN's Least Developed Country status** by 2024
- Expected to become the **26th largest economy** by 2030
- **66%** of the population is **under the age of 25**

In addition to the aforementioned indicators of Bangladesh's upcoming prominence on the global stage, there are **multi-billion dollar infrastructure projects underway** all across the country to **encourage international trade and foreign investment**. Some of the most **noteworthy projects** so far include:

- **Padma Bridge** - \$3.6 billion, 77% completed
- **Dhaka Metro Rail** - \$2.8 billion, 40% completed
- **Karnaphuli Tunnel** - \$1.2 billion, 50% completed
- **Mawa Expressway** - \$1.3 billion, completed
- **Matarbari Deep Sea Port** - \$2.1 billion, underway
- **Dhaka Airport (New Terminal)** - \$2.5 billion, underway

# CONTACT US

**LOOKING FORWARD TO HEARING FROM YOU!**

For **general inquiries** please **e-mail** [info@cncgroupbd.com](mailto:info@cncgroupbd.com) or fill out the **form** on our website at [www.cncgroupbd.net](http://www.cncgroupbd.net).

For industry-specific inquiries, please e-mail us at:

- **Garment Trims & Accessories (Zipper)**  
[nal.dhk.cus@cncgroupbd.com](mailto:nal.dhk.cus@cncgroupbd.com)
- **Shipping & Allied Services**  
[cel.ctg.mkt@cncgroupbd.com](mailto:cel.ctg.mkt@cncgroupbd.com)
- **Injection-molded Plastics (Hanger)**  
[nal.ctg.mkt@cncgroupbd.com](mailto:nal.ctg.mkt@cncgroupbd.com)
- **Fast-Moving Consumer Goods (Bar Soap)**  
[ssl.ctg.act@cncgroupbd.com](mailto:ssl.ctg.act@cncgroupbd.com)
- **Engineering & Construction Services**  
[jes.ctg.pms@cncgroupbd.com](mailto:jes.ctg.pms@cncgroupbd.com)

## Chattogram Office



Atlas Rangs Plaza (6th floor),  
7 Sk. Mujib Road, Agrabad C/A,  
Chattogram, 4100, Bangladesh



+880 (31) 711019  
+880 (31) 711020  
+880 (31) 711021

## Dhaka Office



Chayaneer # G1 (Ground Floor),  
House # 45, Road # 27, Banani,  
Dhaka, 1213, Bangladesh



+880 (2) 5503 3744  
+880 (2) 5503 4034  
+880 (2) 5503 3628

